

Nussbaum

AUTOMOTIVE SOLUTIONS



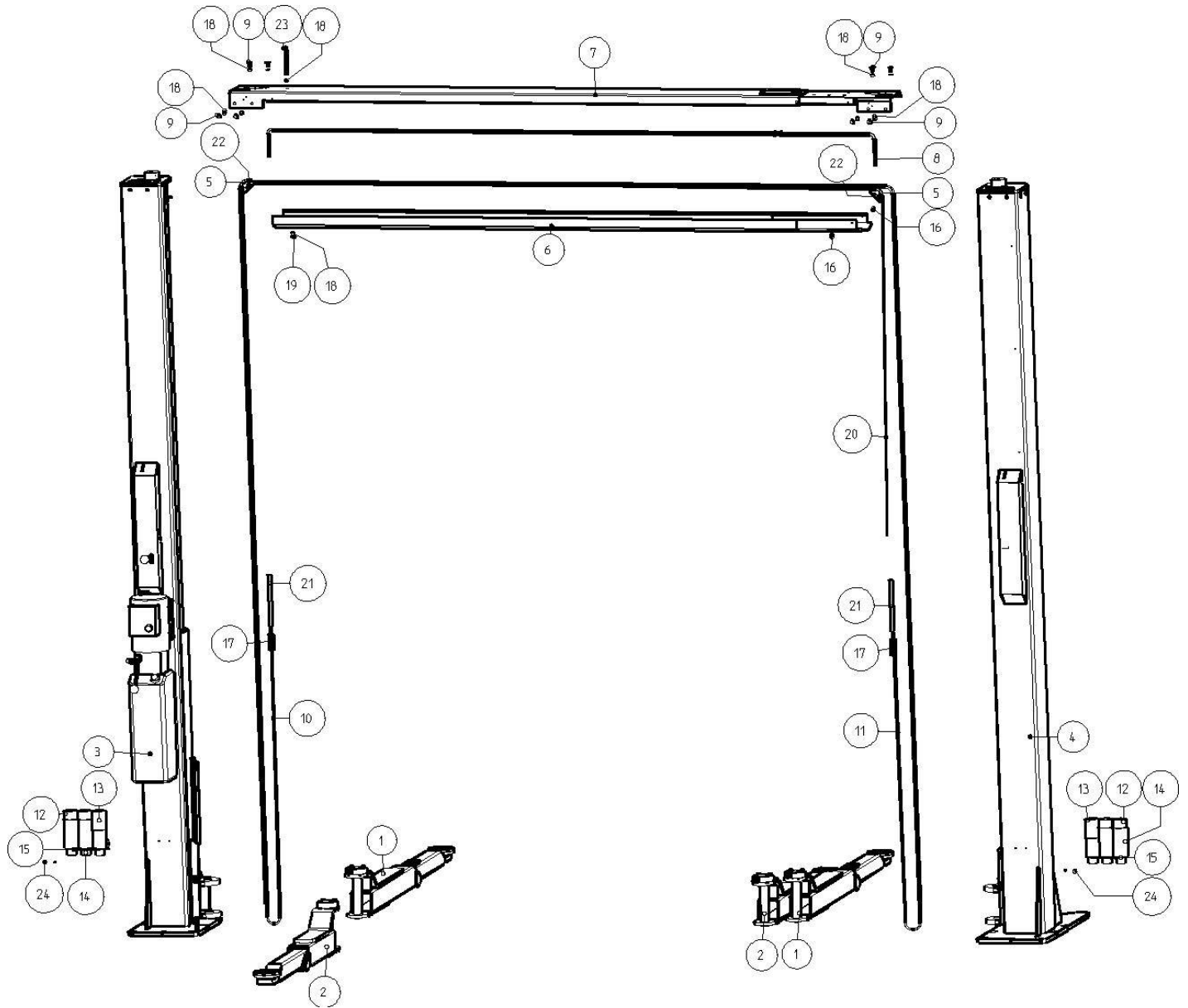
SPL10000 Spare Parts Catalog

Rev Date: 8/20/2018

Table of Contents

Table of Contents	2
Lift SPL 10000 OVERVIEW	3
2100SPL05101 LIFTING COLUMN 1	5
2100SPL05131 LIFTING COLUMN 2	8
240SPL02020DE CYLINDER 1.....	11
240SPL02010DE CYLINDER 2.....	12
2100SPL06101 SLIDING CARRIAGE 1	13
2100SPL06137 SLIDING CARRIAGE 2	14
2100SPL05080 TELESCOPE TRAVERSE	15
2100SPL05085 TELESCOPE SHUT-OFF COVER	15
245SPL91007 TELESCOPE TUBE	16
2100SPL08801 STANDARD ARM LONG.....	16
2100SPL08820 STANDARD ARM SHORT	17
2100SPL28217 ADAPTER PAD	17
SPL10-F2100 3-STAGE ARM SHORT	18
2100SPL08801A 3-STAGE ARM LONG.....	19
277SPLUSA08001 LOW PROFILE ARM LONG	20
277SPLUSA08010 LOW PROFILE ARM SHORT	21
35DJA08451 DOUBLE JOINTED ARMS LONG 1	22
35DJA08461 DOUBLE JOINTED ARMS LONG 2	24
SPL10-F1107 ADJUSTABLE ADAPTER ASSEMBLY	26

Lift SPL 10000 OVERVIEW



(Lift SPL 10000 OVERVIEW CONTINUED)

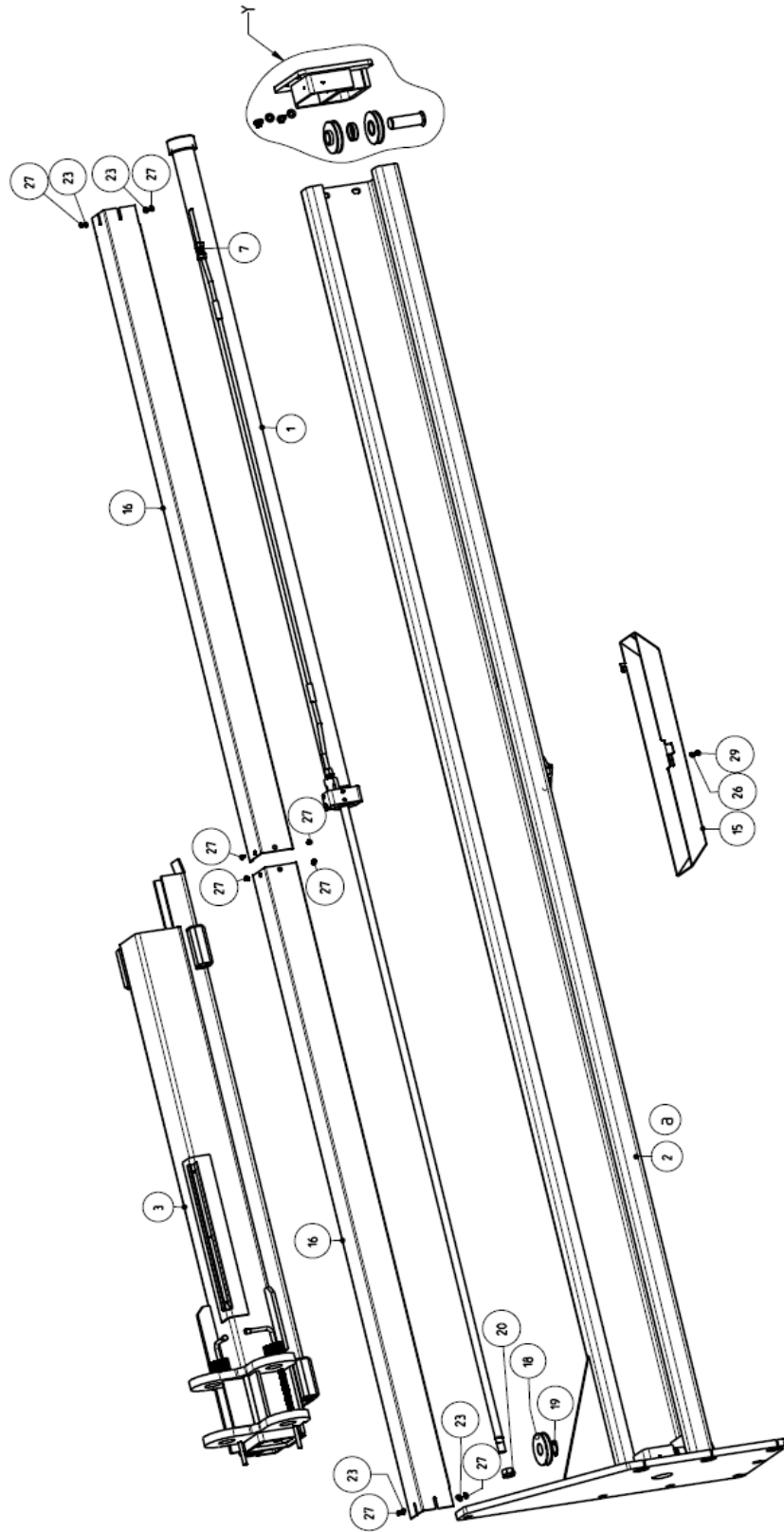
POSITION	ITEM	DESIGNATION
1	2100SPL08801	ARM LONG
2	2100SPL08820	ARM SHORT
3	2100SPL05101	LIFTING COLUMN 1
4	2100SPL05131	LIFTING COLUMN 2
5	2100SPL06048	CABLE GUIDE
6	2100SPL05085	TELESCOPE SHUT-OFF COVER
7	2100SPL05080	TELESCOPE TRAVERSE
8	245SPL91007	TELESCOPE TUBE
9	9931M10X20ZN	HEXAGON BOLT
10	9704050	ROPE
11	9704050	ROPE
12	245SPL08032	EXTENSION 1.6"
13	245SPL08031	EXTENSION 3.5"
14	245SPL08030	EXTENSION 5.5"
15	2100SPL08276	EXTENSION HOLDER
16	9921M06X12ZN	FLAT HEADED SCREW
17	2100SPL05169	HEXAGON NUT
18	9125M10ZN	SHIM
19	9985M10ZN	HEX NUT
20	BOWTEN CABLE	STAINLESS STEEL STRANDED
21	245SPL05168	THREAD BAR
22	9912M05X006ZN	CYLINDER SCREW
23	9912M10X125ZN	CYLINDER SCREW
24	9912M6X10ZN	CYLINDER SCRE

(2100SPL05101 LIFTING COLUMN 1 CONTINUED)

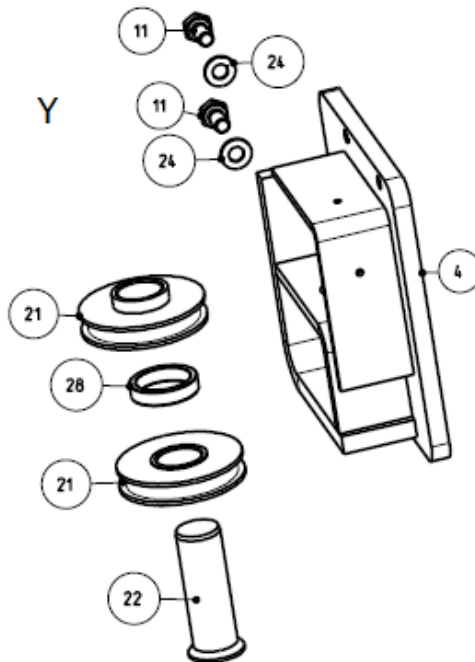
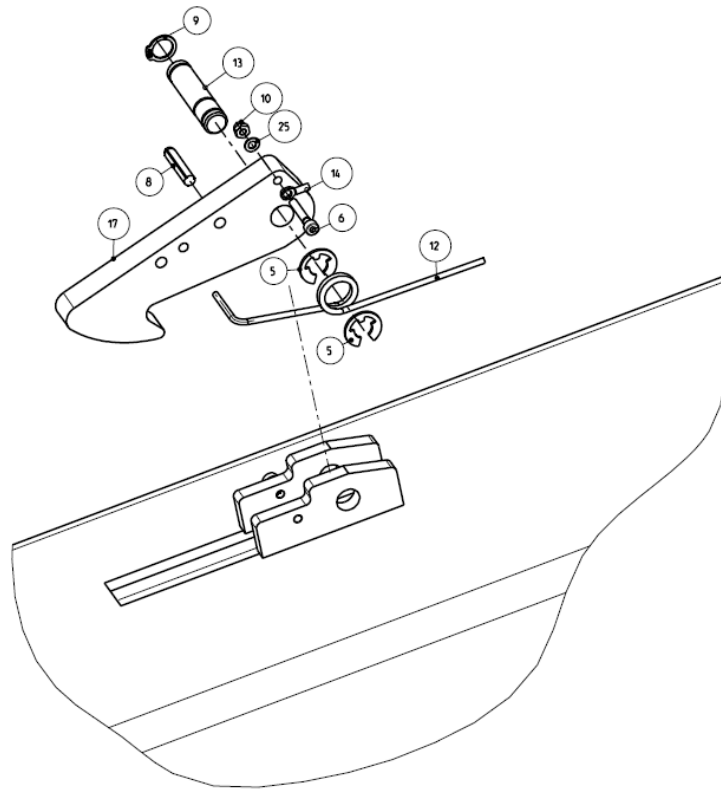
POSITION	ITEM	DESIGNATION
1	240SPL02020	CYLINDER 1
2	2100SPL05126	LEVER WELDMENT
3	2100SPL05103	LIFTING COLUMN WELDMENT
4	2100SPL06101	SLIDING CARRIAGE 1
5	2100SPL10121	SWITCH ROD WELDMENT
6	240SPL91010	T-FITTING
7	2100SPL25020	TOP PLATE
8	9EVW10PL	FITTING
9	9E-050	BASIC E-CLIP
10	9E-075	BASIC E-CLIP
11	9912M004X25ZN	CYLINDER SCREW
12	9G10PL	FITTING
13	9ISO8740-6X30	GROOVED CYLINDER PIN
14	9471-12X1	METRIC SNAP RING
15	9931M10X20ZN	HEXAGON BOLT
16	9T-19175R	SPRING
17	2100SPL06131	AXLE
18	9RAP10	CLAMP RAP-110
19	2100SPL35218	COVER 1
20	2100POW09003	CYLINDER COVER
21	232POW10020	GUIDE
22	9720290	BALL KNOB
23	2100SPL06035	LATCH
24	2100SPL05127	LEVER
25	990004	LIMIT SWITCH
26	232NSTL05063	LOWER ROPE SHEAVE
27	9471-30X1.5	SNAP RING
28	9M10L	NUT FOR FITTING
29	9ISO10511-M18X1.5	NUT M18x1.5
30	AGGREGAT-AC10AH	POWER UNIT
31	9PS_D221	PRESSURE SPRING
32	235SPL25081	ROPE SHEAVE
33	232POW05026	ROPE SHEAVE BOLT
34	970010	ROSETTE
35	9125M10ZN	SHIM
36	9125M05ZN	SHIM
37	9125M08ZN	SHIM
38	9985M8ZN	HEXAGON NUT
39	9985M10ZN	HEXAGON NUT
40	9933M8X20ZN	HEXAGON SCREW
41	97991M005X008ZN	SCREW
42	232NSTL05034D	SPACER
43	9T-19320L	SPIRAL SPRING

44	2100SPL01008	STEEL TUBE
45	2100SPL01009	STEEL TUBE
46	9GE10-3_8NPT	FITTING
47	9912M05X006ZN	CYLINDER SCREW
48	9912M08X025ZN	CYLINDER SCREW
49	9912M6X25ZN	CYLINDER SCREW
50	9912M06X20ZN	CYLINDER SCREW

2100SPL05131 LIFTING COLUMN 2



(2100SPL05131 LIFTING COLUMN 2 CONTINUED)



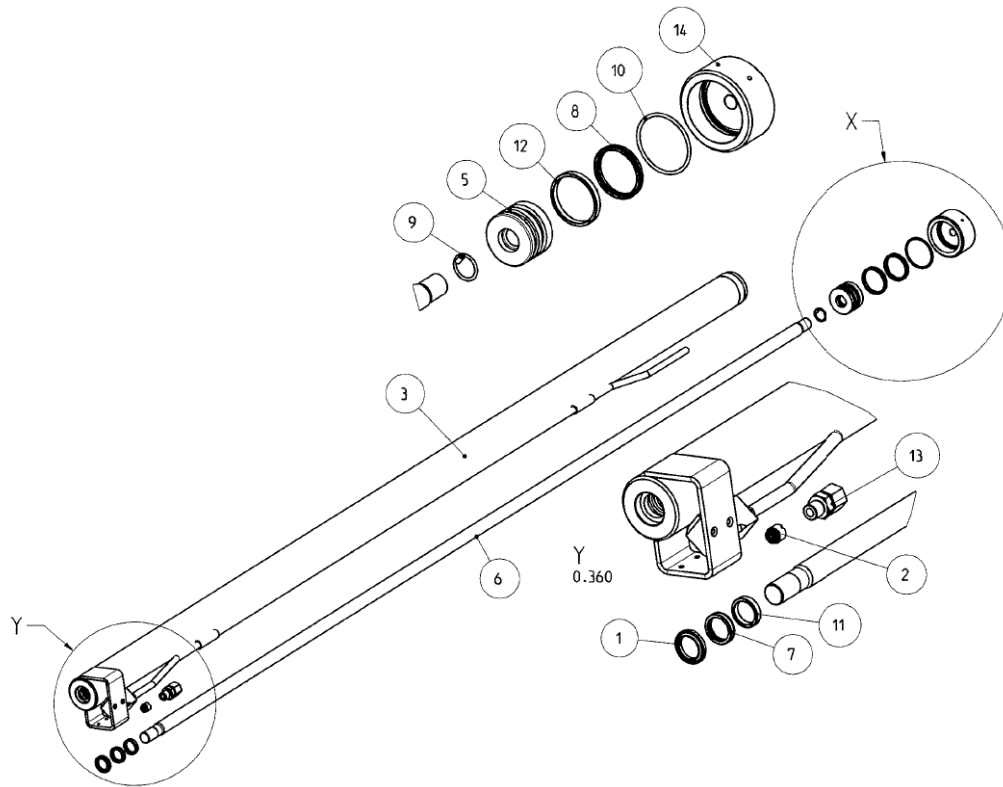
(2100SPL05131 LIFTING COLUMN 2 CONTINUED)

POSITION	ITEM	DESIGNATION
1	240SPL02010dDE	CYLINDER 2
2	2100SPL05133	LIFTING COLUMN WELDMENT
3	2100SPL06137	SLIDING CARRIAGE 2
4	2100SPL25056	TOP PLATE WELDMENT
5	9ECLIP500042BLK	E-CLIP ½” DIA x .042
6	9SHCSM04X70025Z	SCREW-SOCKET HEAD CAP M04-0.7 x 25mm
7	947255-06-06	HYDRAULIC-3/8“ COMPRESSION TO 3/8“ NPT ADAPTER
8	9DSPINM06X30Z0	PIN-SPRING M6 x 30mm BLACK OXIDE
9	95RD471M12X0010B	SNAP RING, METRIC EXTERNAL M12x10B0
10	9NUTM040702NH0NY0985	NUT-M04-0.7 ZINC NYLON LOCK
11	9HHCSM10X150020Z0	SCREW-HEX HEAD CAP M10-1.5x20mm ZINC
12	9T-19320R	SPRING-TORSION, CARBON STEEL 2273-3
13	2100SPL06131	AXLE
14	9RCABLE3327X19GAC	CABLE-MANUAL LATCH RELEASE
15	92100SPL35318	COVER-SLAVE MANUAL LOCK
16	92100POW09003	CYLINDER COVER
17	2100SPL06035	LATCH
18	9232NSTL05063	CABLE ROLLER 85x17 PA6.6
19	9SRD471M30X0015B	SNAP RING, METRIC EXTERNAL M30x1.5
20	9NUTM18150ZHNH41051	NUT M18x1.5 ZINC NYLON LOCK
21	9235SPL25081	CABLE ROLLER 85x26 PA6.6
22	232POW05026	BOLT-CABLE ROLLER
23	9WMF1000000ZNF013912	WASHER-COUNTERSUNK FINISHING #10
24	9WM10000000ZNF000125	WASHER-FLAT M10
26	9WMF1000000ZNF013912	WASHER-COUNTERSUNK FINISHING #10
27	9FHMSM05X080010Z	SCREW-FLAT HEAD MACHINE M05-.080x10mm
28	9232NSTL05034D	SPACER 44.5x4.5x10 PA6 NATURAL
29	9FHMSM05X080010Z	SCREW-FLAT HEAD MACHINE M05-.080x10mm

NOT SHOWN

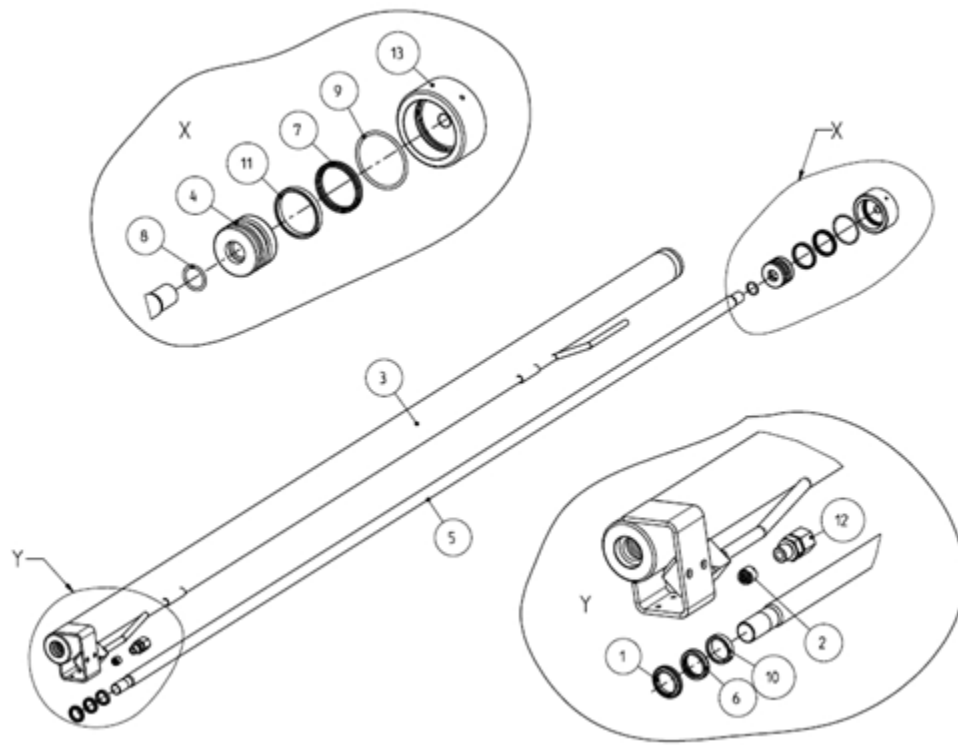
- 9704050-US: CABLE-EQUALIZER
- 9A53047TW: WASHER-THRUST
- 91018Z9: HYDRAULIC ADAPTER BODY-10mm COMPRESSION TO 3/8” MALE

240SPL02020DE CYLINDER 1



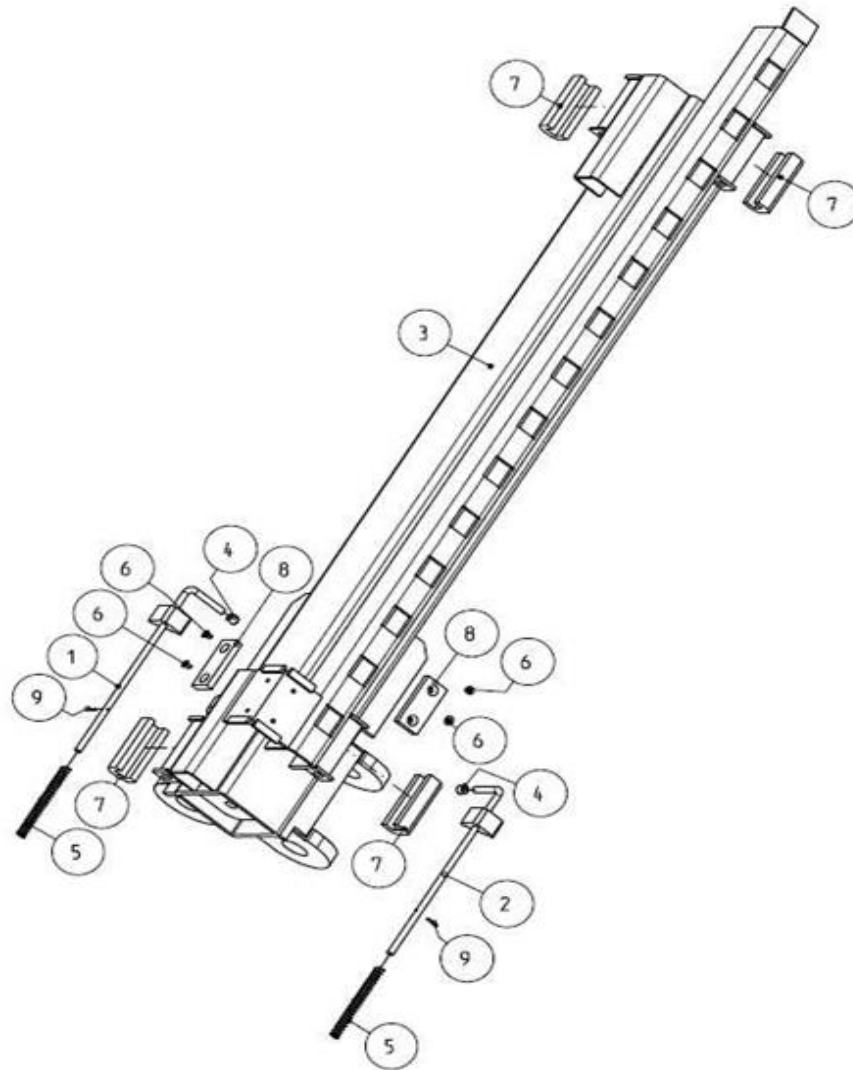
POSITION	ITEM	DESIGNATION
1	980226DE	WIPER
2	240SPL02128DE	RESTRICTOR VALVE
3	232POW22002DE	CYLINDER
4	9913M04X08ZNDE	SET SCREW
5	240POW02010DE	PISTON
6	232POW02011DE	PISTON ROD
7	980225DE	PACKING RING
8	980702DE	PACKING RING
9	9OR15X2DE	O-RING
10	9OR47.29X2.62DE	O-RING
11	980434DE	GUIDE RING
12	980703DE	GUIDE RING
13	GE10PLREDDE	FITTING
14	232POW22013DE	CYLINDER CAP

240SPL02010DE CYLINDER 2



POSITION	ITEM	DESIGNATION
1	980226DE	WIPER
2	240SPL02128DE	RESTRICTOR VALVE
3	232POW22003DE	CYLINDER
4	240POW02010DE	PISTON
5	232POW02011DE	PISTON ROD
6	980225DE	PACKING RING
7	980702DE	PACKING RING
8	9OR15X2DE	O-RING
9	9OR47_29X2_62DE	O-RING
10	980434DE	GUIDE RING
11	980703DE	GUIDE RING
12	GE10PLR-EDDE	FITTING
13	232POW22013DE	CYLINDER CAP

2100SPL06101 SLIDING CARRIAGE 1

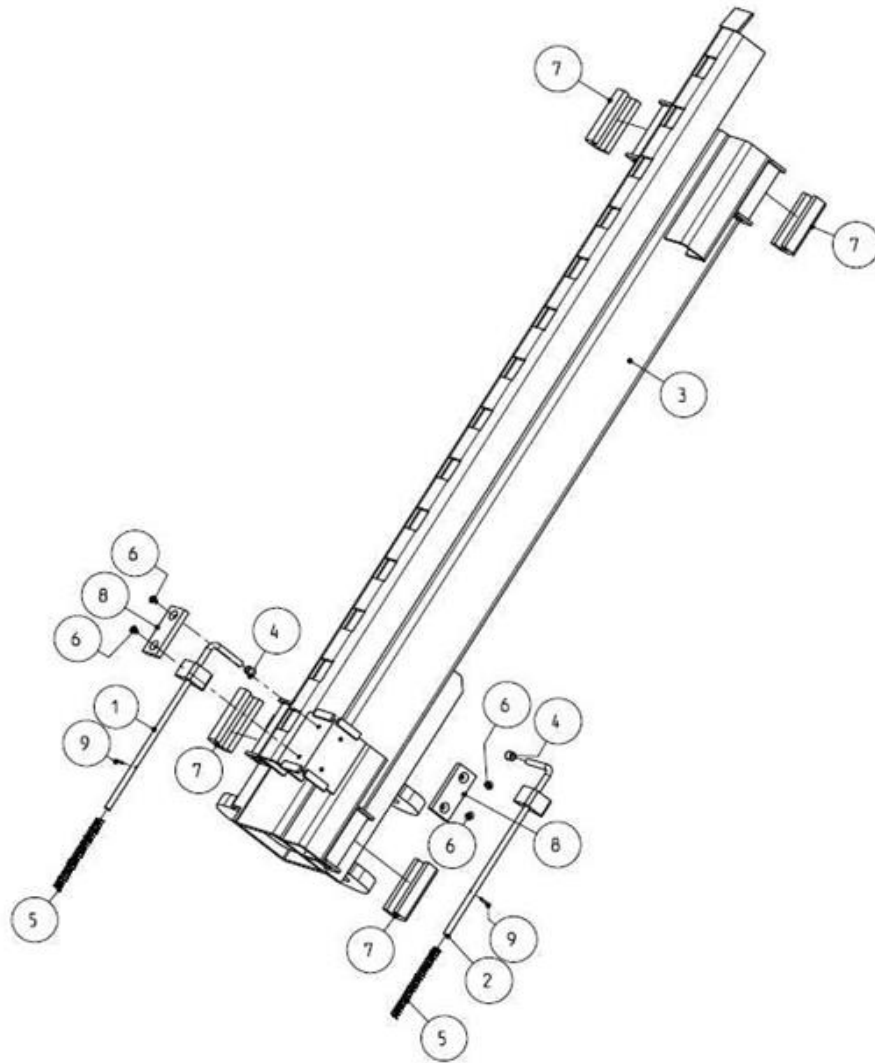


POSITION	ITEM	DESIGNATION
1	2100SPL08186	RESTRAINT PAWL 1
2	2100SPL08185	RESTRAINT PAWL 2
3	2100SPL06103	SLIDING CARRIAGE 1
4	970080	CAP
5	9DFD-222SL01ZN	SPRING-COMPRESSION
6	9FHMSM06X100010Z	SCREW-FLAT HEAD MACHINE M06-1.0x10mm
7	9232POW06014	SLIDER
8	9232POW06015	SLIDER BELOW
9	91SPINM03X20B	PIN-SPRING 3mm x 20mm

NOT SHOWN

- 9225SLO6103S3: DOOR PROTECTOR

2100SPL06137 SLIDING CARRIAGE 2

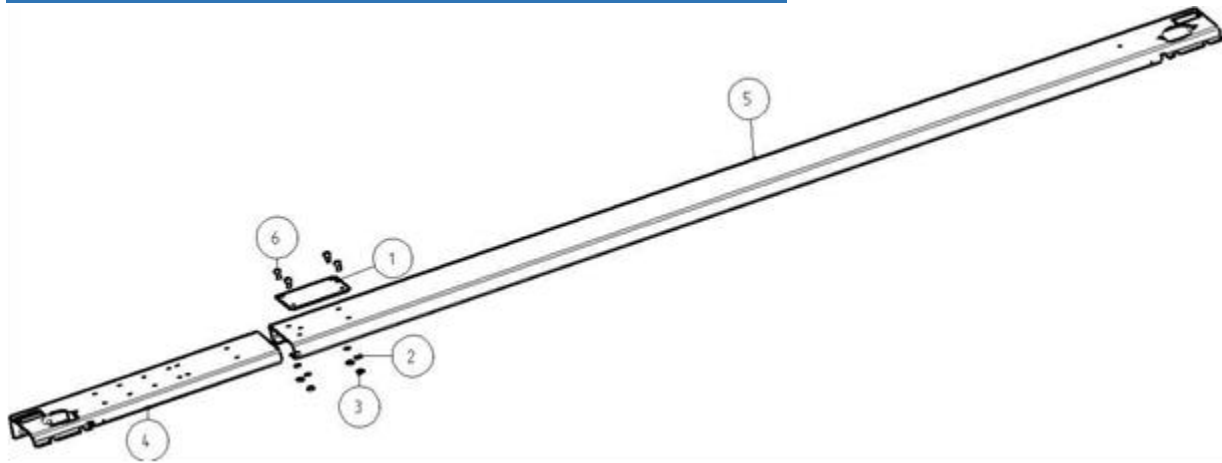


POSITION	ITEM	DESIGNATION
1	2100SPL08186	RESTRAINT PAWL 1
2	2100SPL08185	RESTRAINT PAWL 2
3	2100SPL06139	SLIDING CARRIAGE 2
4	970080	CAP
5	9DFD-222SL01ZN	SPRING-COMPRESSION
6	9FHMSM06X100016Z	SCREW-FLAT HEAD MACHINE M06-1.0 x 16mm
7	9232POW06014	SLIDER
8	9232POW06015	SLIDER BELOW
9	91SPINM03X20B	PIN-SPRING 3mm x 20 mm

NOT SHOWN

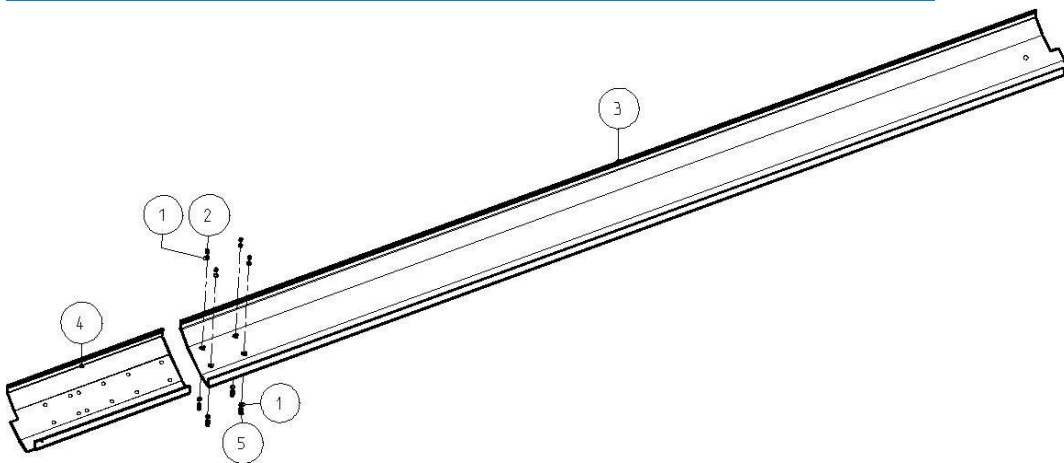
- 9225SLO6103S3: DOOR PROTECTOR

2100SPL05080 TELESCOPE TRAVERSE



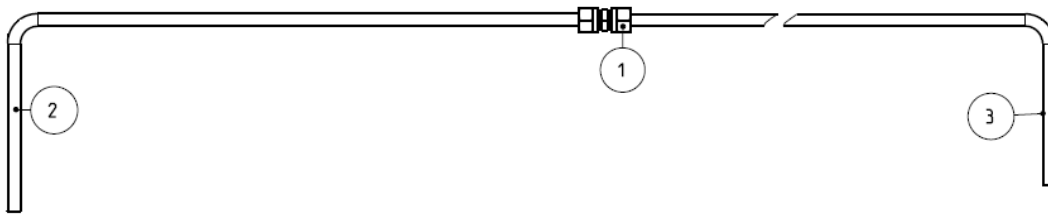
POSITION	ITEM	DESIGNATION
1	2100SPL05084	REINFORCING
2	9WM10000000ZNF000125	WASHER-FLAT M10
3	9NUTM10150ZNH0NY0985	NUT-M10-1.50 ZINC NYLON LOCK
4	92100SPL05082WM	TRAVERSE SLIDING PART
5	92100SPL05081	TRAVERSE TELESCOPE
6	9HHCSM10X150020Z0	HEX HEAD CAP M10-1.5 x 20mm

2100SPL05085 TELESCOPE SHUT-OFF COVER



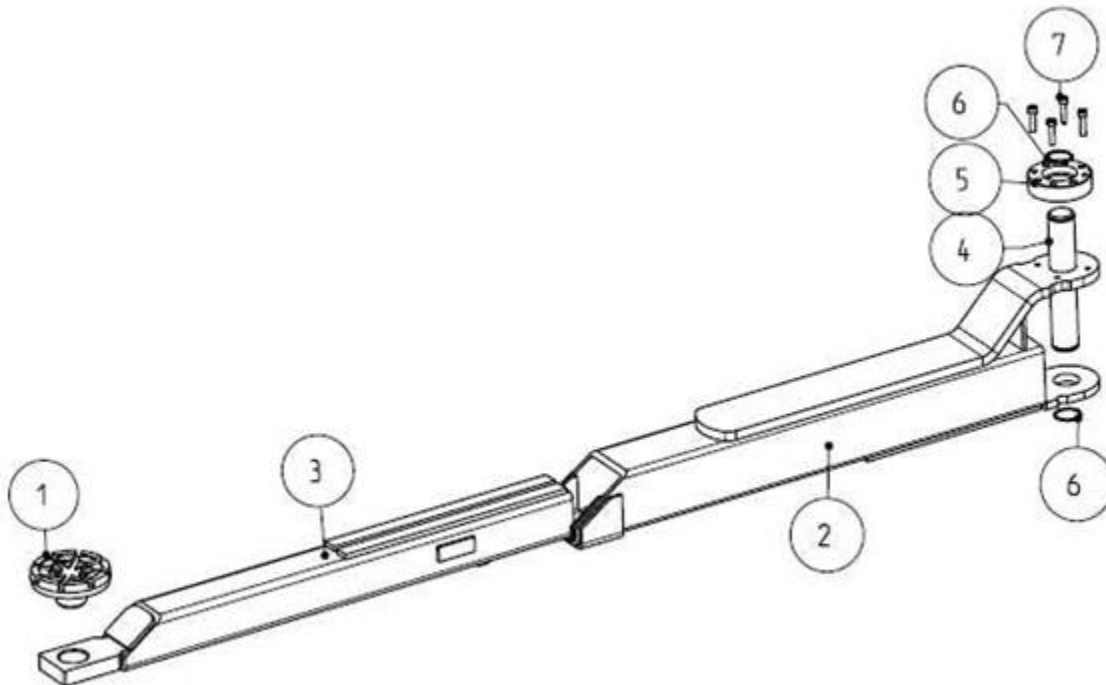
POSITION	ITEM	DESIGNATION
1	9WM06000000ZNF000125	WASHER-FLAT M06
2	9NUTM06100ZNH0NY0985	NUT-M06-1.00
3	92100SPL05086	SHUT-OFF COVER 1
4	92100SPL05087WM	SHUT-OFF COVER 2
5	9HHCSM06X100016Z	SCREW-HEX HEAD CAP M06-1.00 x 16mm

245SPL91007 TELESCOPE TUBE



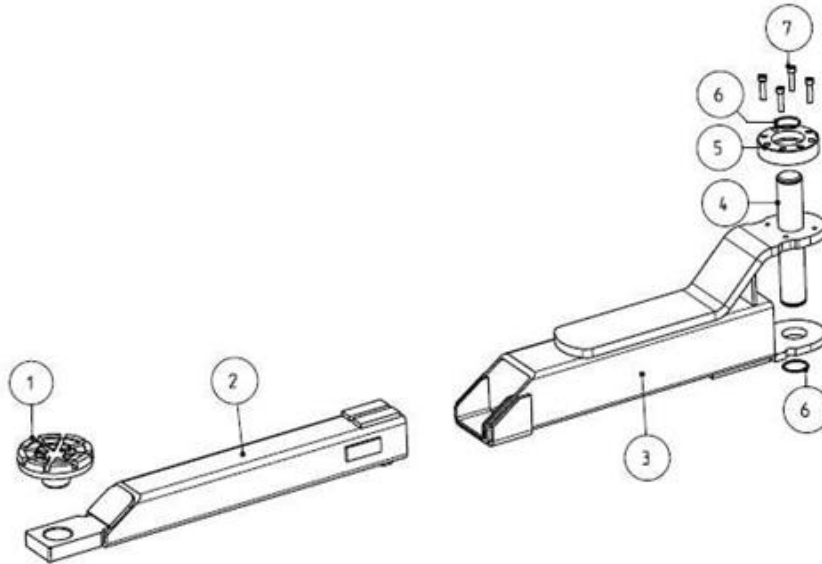
POSITION	ITEM	DESIGNATION
1	947305-06-00	FITTING HYDRAULIC COMPRESSION UNION
2	9245SPL91004	HYDRAULIC TUBE – 3/8"
3	9245SPL91006	HYDRAULIC TUBE – 3/8"

2100SPL08801 STANDARD ARM LONG



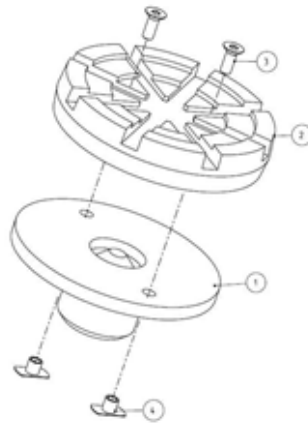
POSITION	ITEM	DESIGNATION
1	2100SPL28217	ADAPTER PAD ASSEMBLY
2	2100SPL08803	OUTER ARM LONG
3	2100SPL08815	INNER ARM LONG
4	245SPL28016	PIVOT BOLT
5	9250SL08039	RESTRAINT GEAR
6	970006	SNAP RING
7	95HCSM08X125035Z	SCREW-SOCKET HEAD CAP M08-1.25 x 35 mm

2100SPL08820 STANDARD ARM SHORT



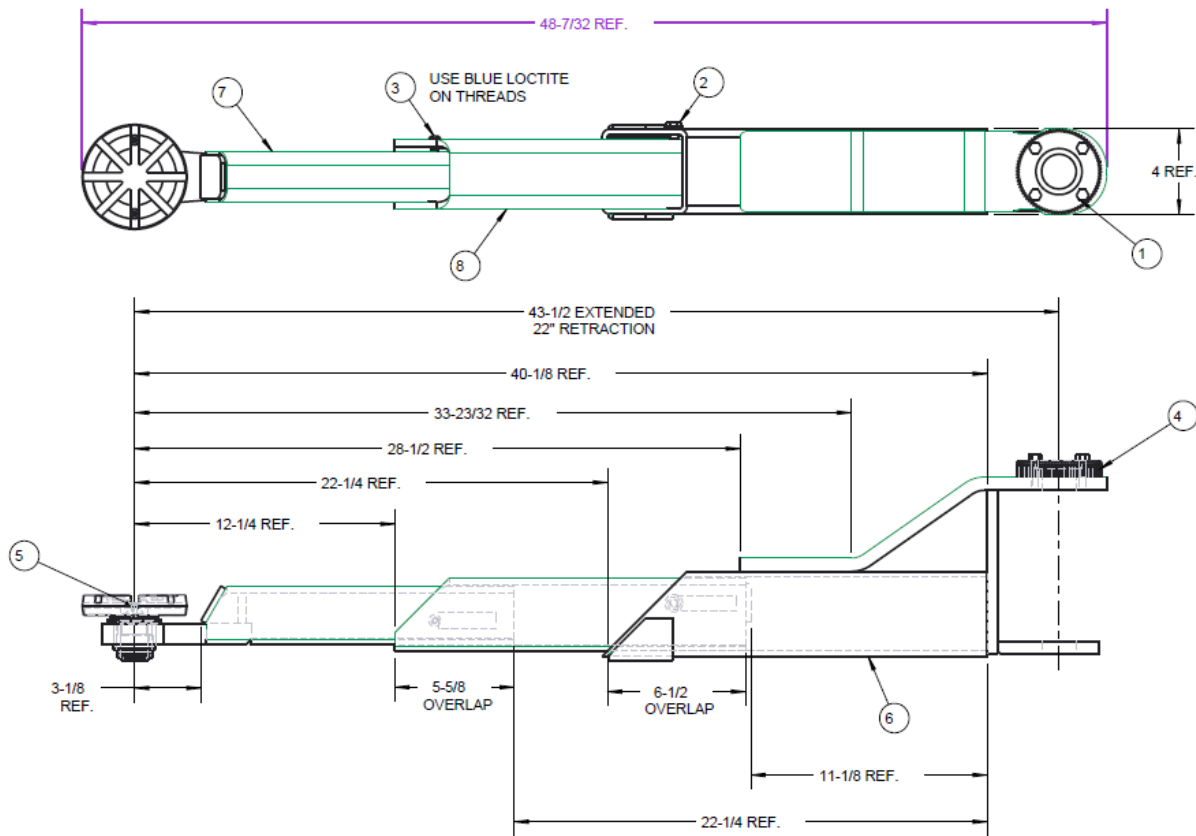
POSITION	ITEM	DESIGNATION
1	2100SPL28217	ADAPTER PAD ASSEMBLY
2	2100SPL08828	SHORT INNER ARM WELD
3	2100SPL08823	SHORT OUTER ARM WELD
4	245SPL28016	PIVOT BOLT
5	9250SL08039	RESTRAINT GEAR
6	970006	SNAP RING
7	9SHCSM08X125035Z	SOCKET HEAD CAP SCREW M08-1.25 x 35mm

2100SPL28217 ADAPTER PAD



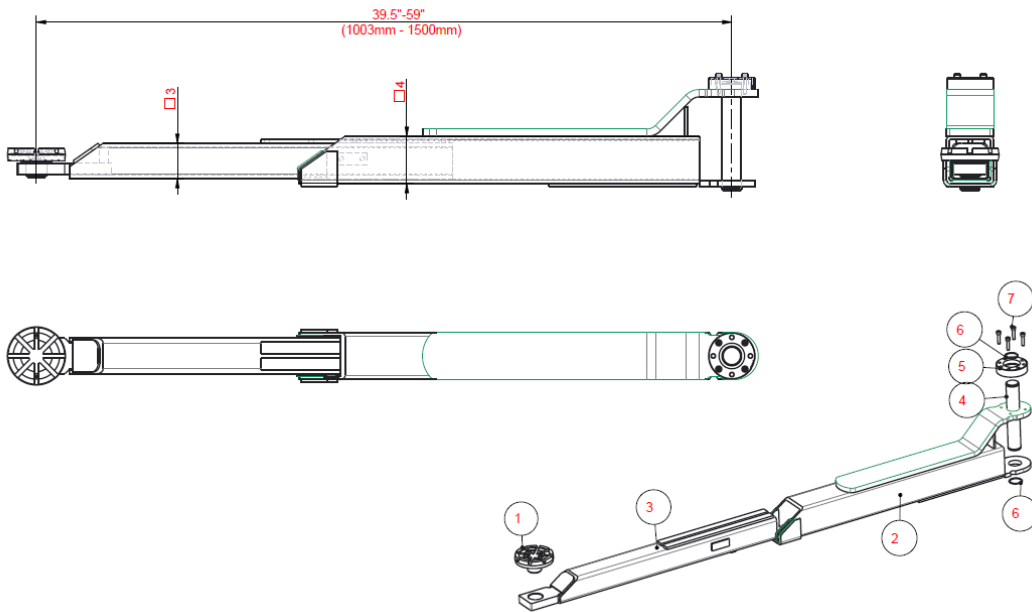
POSITION	ITEM	DESIGNATION
1	2100SPL28220	ROUND PLATE WELDMENT
2	91103031	RUBBER PAD
3	9FHMSM06X100020Z	SCREW-FLAT HEAD MACHINE
4	90301M06X07.	

SPL10-F2100 3-STAGE ARM SHORT



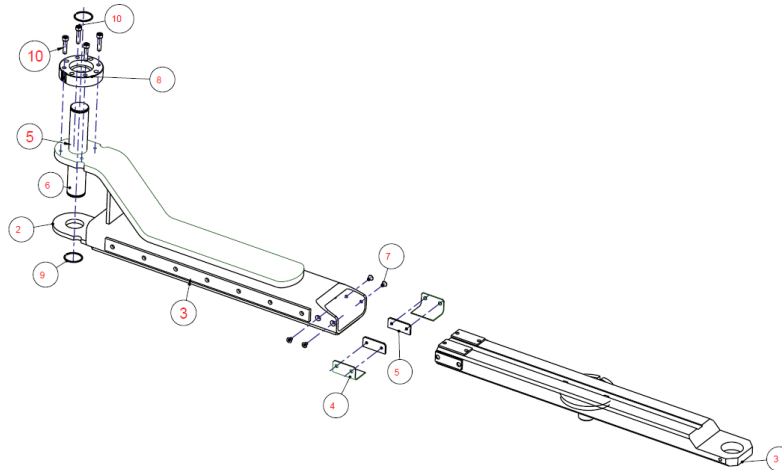
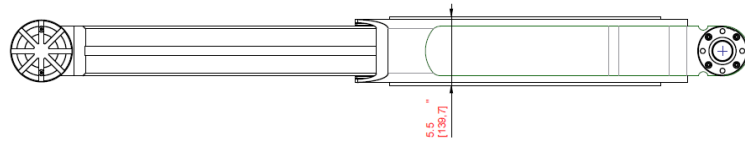
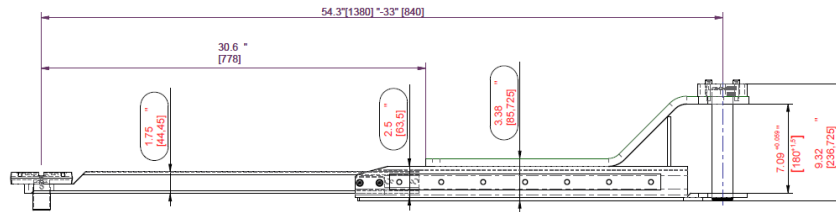
POSITION	ITEM	DESIGNATION
1	91009	M8X1.25 X 35MM LG HHCS, PLATED GR 8.8
2	91010	M10X1.5X12MM LG SERRATED FLGD HEAD CS, PLATED GR 8.8
3	91011	M8X1.25X12mm LG BUTTON HEAD CS, PLATED GR10.9
4	SPL10-C1016	ARM RESTRAINT GEAR
5	SPL10-F1107	ADJUSTABLE ADAPTER ASSEMBLY
6	SPL10-F2101	3S FRONT OUTER ARM WELD
7	SPL10-F2104	3S INNER ARM WELDMENT
8	SPL10-F2108	3S MIDDLE ARM WELD

2100SPL08801A 3-STAGE ARM LONG



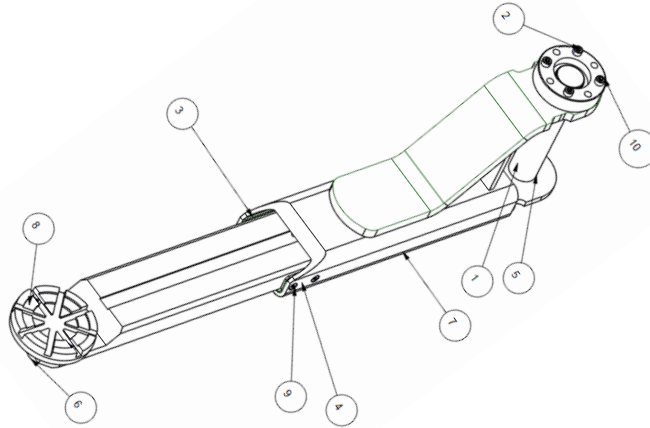
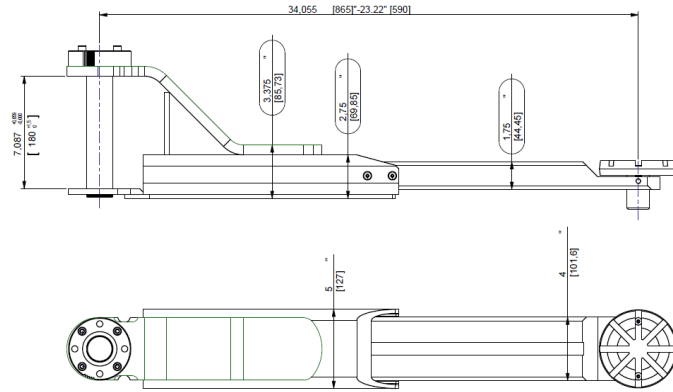
POSITION	ITEM	DESIGNATION
1	2100SPL28217	ADAPTER PAD
2	2100SPL08803	CARRIER PICE LONG
3	2100SPL08815	FRONT PICE LONG
4	245SPL28016_	PIVOT BOLT
5	250SL08039_	SERRATED WASHER
6	970006_	SHAFT RING
7	9912M08X35ZN	CYLINDER SCREW

277SPLUSA08001 LOW PROFILE ARM LONG



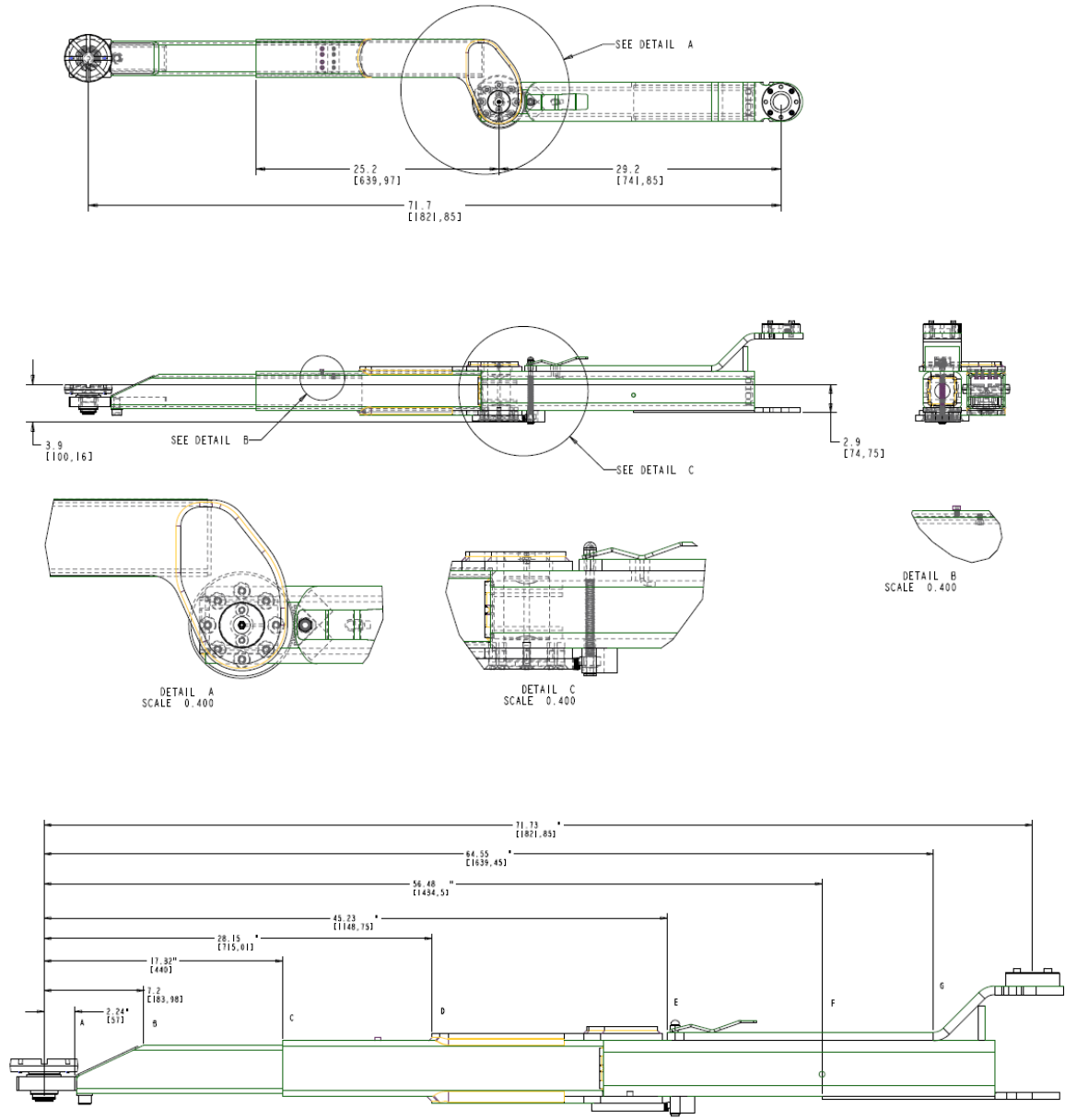
POSITION	ITEM	DESIGNATION
1	277SPLUSA08020	ADAPTER PAD
2	277SPLUSA08003	CARRIAGE ARM
3	277SPLUSA08002	SLIDE ARM
4	277SPLUSA08011	ANGLE
5	277SPLUSA08012	FLAT
6	277SPLUSA08015	PIVOT BOLT
7	97991M006X020ZN	LOWERING SCREW
8	250SL08039_	SERRATED WASHER
9	97006	SNAP RING
10	9912M08X35ZN	CYLINDER HEAD SCREW

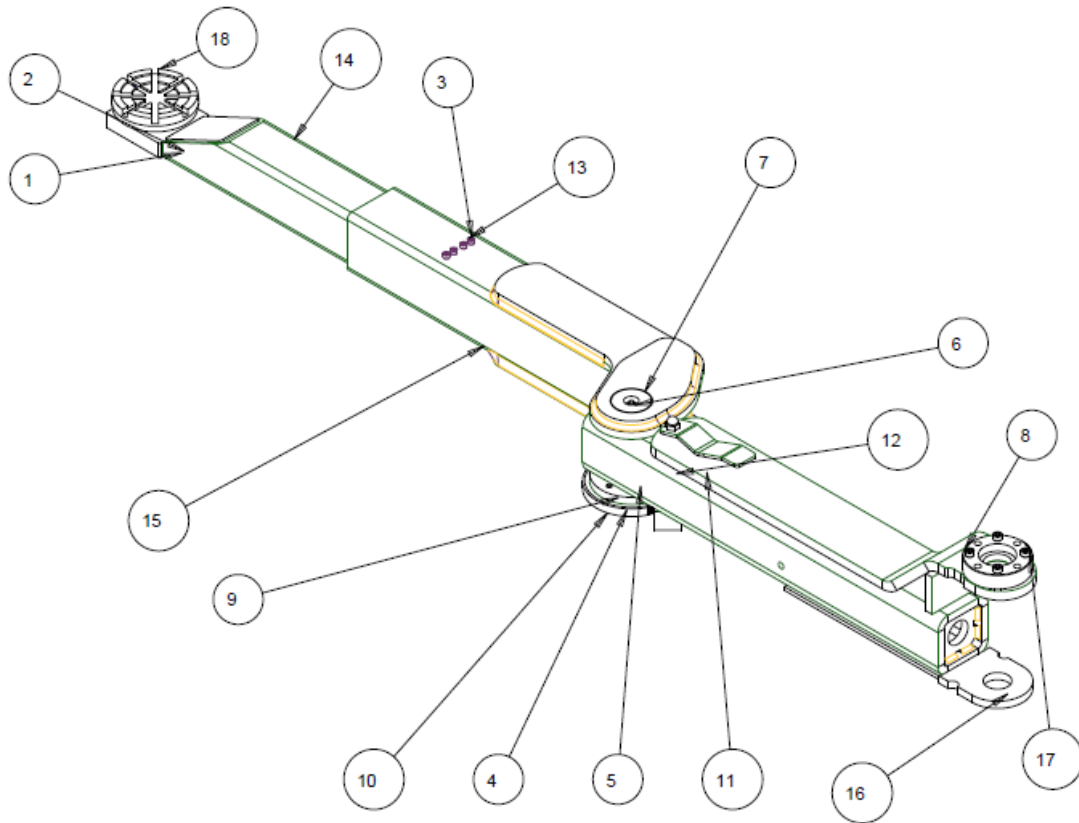
277SPLUSA08010 LOW PROFILE ARM SHORT



POSITION	ITEM	DESIGNATION
1	970006	SNAP RING
2	250SL08039_	ADAPTER ASSEMBLY
3	277SPLUSA08011	ANGLE
4	277SPLUSA08012	FLAT
5	277SPLUSA08015	PIVOT BOLT
6	277SPLUSA08020	ADAPTER PAD
7	277SPLUSA08033	CARRIAGE ARM
8	277SPLUSA08040	SLIDE ARM ASSEMBLY
9	97991M006X010ZN	LOWERING SCREW
10	9912M08X35ZN	CYLINDER HEAD SCREW

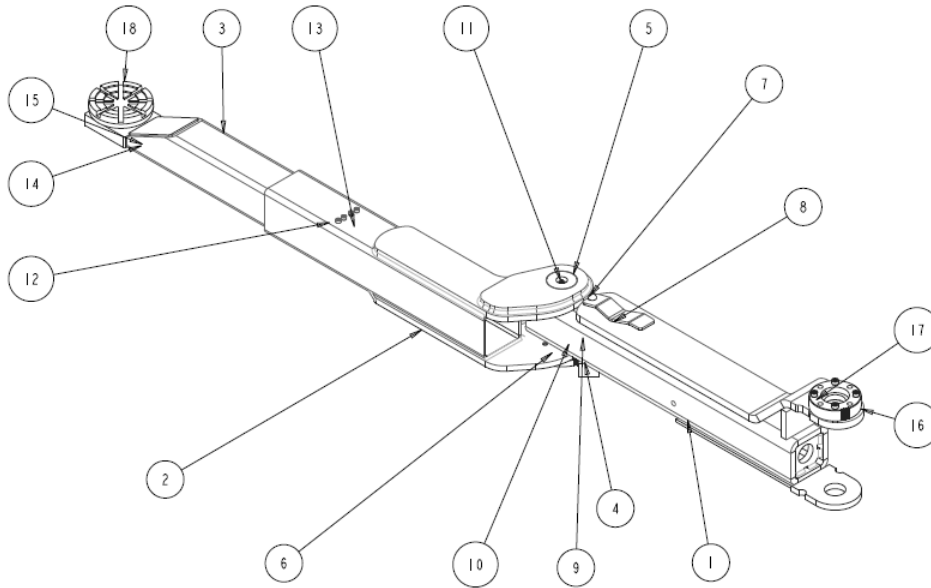
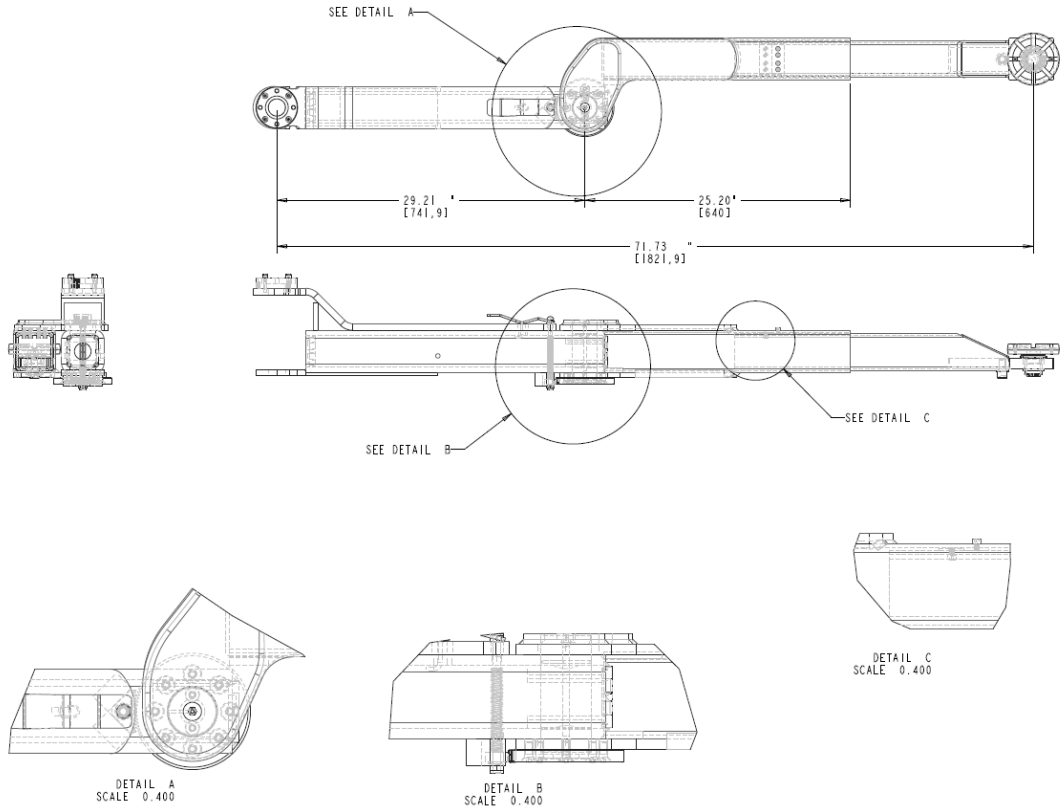
35DJA08451 DOUBLE JOINTED ARMS LONG 1





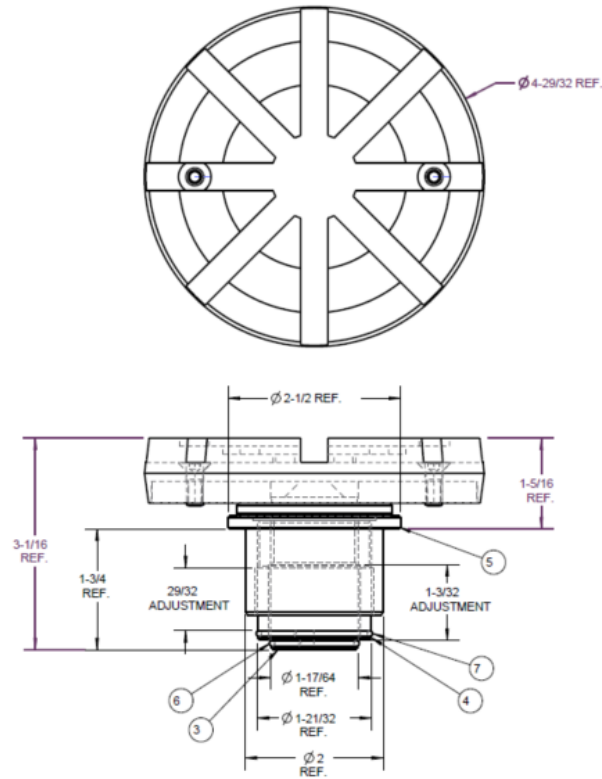
POSITION	ITEM	DESIGNATION
1	9125_1-A17	WASHER
2	9912-M16X30	CYLINDER SCREW
3	9912-M6X8	CYLINDER SCREW
4	97991-M10X25	FLAT HEAD SOCKET SCREW
5	97991-M8X25	FLAT HEAD SOCKET SCREW
6	971412-AM8X1	LUBRICATING NIPPLES
7	235SLH08274	SUPPORT ARM BOLT-FRONT
8	250SL08039_	ADAPTER ASSEMBLY
9	250SLH08176	LOCK WASHER
10	250SLH08197	LOCK WASHER-TOOTHED
11	35DJA08091	LOCK LEVER WELD
12	35DJA08093	LOCK ADJUSTMENT SPRING ASSEMBLY
13	35DJA08221	TRAVEL STOP
14	35DJA08243	TELESCOPE WELD
15	35DJA08253	ARM 2 WELD
16	35DJA08253	ARM 1 WELD
17	9912M08X35ZN	CYLINDER SCREW
18	SPL10-F1107	ADAPTER PAD

35DJA08461 DOUBLE JOINTED ARMS LONG 2



POSITION	ITEM	DESIGNATION
1	35DJA28253	ARM 1 WELD
2	35DJA08263	ARM 2 WELD
3	35DJA08243	TELESCOPE WELD
4	250SLH08197	LOCK WASHER-TOOTHED
5	235SLH08274	SUPPORT ARM BOLT-FRONT
6	250SLH08176	LOCK WASHER
7	35DJA08093	LOCK ADJUSTMENT
8	35DJA08091	LOCK LEVER WELD
9	97991-M10X25	FLAT HEAD SOCKET SCREW
10	97991-M8X25	FLAT HEAD SOCKET SCREW
11	971412-AM8X1	LUBRICATING NIPPLES
12	35DJA08221	TRAVEL STOP
13	9912M6X8	CYLINDER SCREW
14	9125_I-A17	WASHER
15	9912-M16X30	CYLINDER SCREW
16	250SL08039_	ADAPTER ASSEMBLY
17	9912M08X35ZN	CYLINDER SCREW
18	SPL10-F1107	ADAPTER PAD

SPL10-F1107 ADJUSTABLE ADAPTER ASSEMBLY



POSITION	ITEM	DESIGNATION
1	01103031	ARM 1 WELD
2	97991M006X016ZN	ARM 2 WELD
3	SPL10-F1108	ADAPTER PAD WELDMENT
4	SPL10-F1111	MIDDLE ADAPTER SCREW
5	SPL10-F1112	OUTER ADAPTER SLEEVE
6	SPL10-F1113	INNER STOP RING
7	SPL10-F1114	MIDDLE STOP RING