



HYDRAULIC 2-POST LIFT

POWER LIFT SLH

ONE LIFT. ENDLESS POSSIBILITIES.



 **EV Ready**

THE NEW GENERATION OF HYDRAULIC LIFTS

- ✓ Best in market pick-up area and arm range for full flexibility and EV compatibility
- ✓ Space-saving design. Save 10" plus per lift, that's almost 30 sqft per bay
- ✓ Up to 50% less installation time due to pre-assembly and the patent pending Quick-Bridge
- ✓ Fine adjustable pick-up pads with additional instant-adjust (patent pending)

8000 LBS | 10000 LBS | 12000 LBS (coming soon)

Made
 in
 Germany

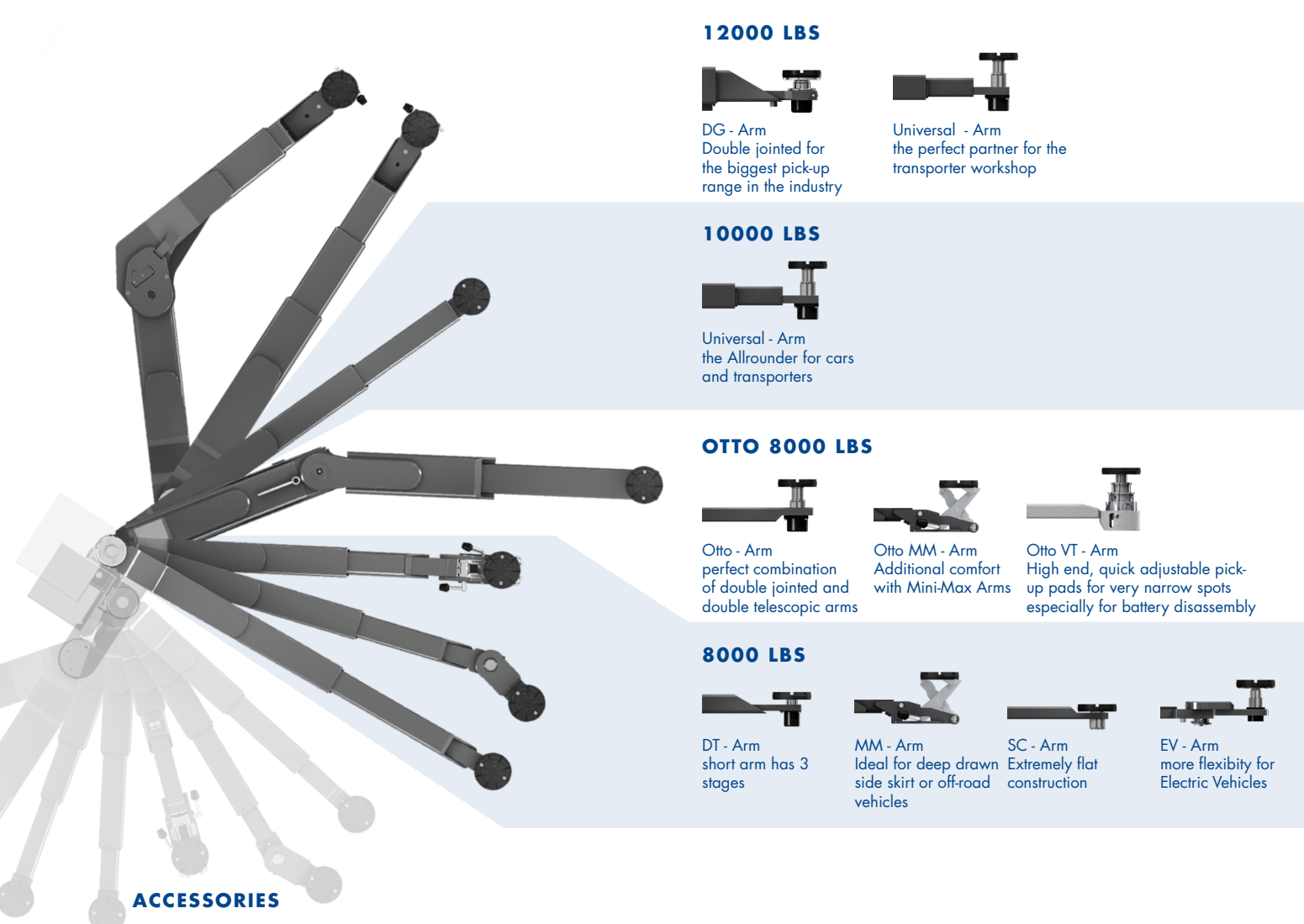


HYDRAULIC 2-POST LIFT

POWER LIFT SLH

Space saving, flexible and fully customizable

Fast lifting and lowering times, mechanical safety locks, mechanical synchronization, high productivity, intelligent features and life cycles up to 30 years: It is not without reason that Nussbaum lifts are considered the best equipment for automotive workshops. The POWER LIFT SLH is the perfect combination of robustness, premium hydraulics and mechanical safety while having industry leading pick-up possibilities. German quality at the service of your workshop.



12000 LBS



DG - Arm
Double jointed for the biggest pick-up range in the industry



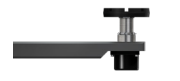
Universal - Arm
the perfect partner for the transporter workshop

10000 LBS



Universal - Arm
the Allrounder for cars and transporters

OTTO 8000 LBS



Otto - Arm
perfect combination of double jointed and double telescopic arms



Otto MM - Arm
Additional comfort with Mini-Max Arms



Otto VT - Arm
High end, quick adjustable pick-up pads for very narrow spots especially for battery disassembly

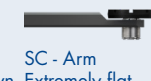
8000 LBS



DT - Arm
short arm has 3 stages



MM - Arm
Ideal for deep drawn side skirt or off-road vehicles



SC - Arm
Extremely flat construction



EV - Arm
more flexibility for Electric Vehicles

ACCESSORIES



Wheel-fork adapter for SLH 12000



Mini-Max adapter for SLH 12000, Capacity 9000 lbs



Full range of plug in adapters available
The perfect match for every gasoline, hybrid or fully electric vehicle

VARIABLE HEIGHT & WIDTH

Minimal height of only 160" up to 195" with optional column extension



POWER LIFT SLH: different versions built to your needs

All versions available with full range of arms and two different height extensions

Mechanical

Air cooled power unit with manual single point lock release

Advanced

Air cooled power unit with electric solenoid lock release

Premium

Oil submerged power unit with Nussbaum Commander for precise lowering and automatic lock release. Specifically designed for EV battery disassembly

Options

Two different height extensions, cylinder covers and E-set available for all versions

Thoughtful design

- ✓ No baseplate
- ✓ Manual or electric lock control available
- ✓ 14 locking positions for comfortable working
- ✓ Two height extensions available
- ✓ Optional cylinder Cover available
- ✓ Door guard on columns
- ✓ Oil submerged motor available: Durable and quiet, constant oil viscosity and therefore constant running speed - even at cold temperatures

Precise control

- ✓ Smooth, precise lowering with the optional NUSSBAUM Commander in Premium series
- ✓ No lifting before lowering necessary with optional automatic lock control



MEASURED FOR SUCCESS

POWER LIFT SLH	8	10	12*
Lifting capacity (lbs)	8,000	10,000	12,000
Lifting height max. (inch)	76 ¼"	78 ¼"	79 ¼"
Lowest lifting point (inch)	Version DT		
	Version MINI-MAX		
	Version SC		
	Version Otto		
	Version Otto MM		
	Version Otto VT		
	Version Universal		
	Version DG		
	3 ¾" - 6"	-	-
	3" - 7 ¼"	-	-
	3 ¼" - 5 ½"	-	-
	4 ½" - 7 ½"	-	-
	3 ½" - 7 ½"	-	-
	3 ½" - 8"	-	-
	-	4 ½" - 7 ½"	5 ¼" - 8"
	-	-	5 ½" - 8 ½"
Total height (inch)	160"/181"	160"/181"	160"/181"/195"
Recommended total width (inch)**	127 ⅞" - 131 ⅞"	128 ¾" - 132 ⅝"	140 ½" - 144 ½"
Column distance (inch)**	105 ⅜" / 109 ¼"	105 ¾" / 109 ⅝"	109 ½" / 113 ⅜"
Arm-extraction long (inch)	Version DT		
	Version MINI-MAX		
	Version SC		
	Version Otto		
	Version Otto MM		
	Version Otto VT		
	Version Universal		
	Version DG		
	37" - 58 ⅞"	-	-
	37" - 58 ⅞"	-	-
	33" - 54 ⅞"	-	-
	39 ⅞" - 71 ¾"	-	-
	36 ⅝" - 72 ⅞"	-	-
	39 ⅞" - 71 ⅞"	-	-
	-	36 ⅝" - 72 ⅞"	33 ⅞" - 72 ⅞"
	-	-	0 - 71 ¾"
Arm-extraction short (inch)	Version DT		
	Version MINI-MAX		
	Version SC		
	Version Otto		
	Version Otto MM		
	Version Otto VT		
	Version Universal		
	Version DG		
	22 ½" - 46"	-	-
	23 ⅝" - 38 ½"	-	-
	23 ¼" - 34"	-	-
	22 ½" - 45 ⅝"	-	-
	23 ¼" - 45 ⅝"	-	-
	19 ½" - 34 ¼"	-	-
	-	23 ¼" - 45 ⅝"	33 ⅞" - 72 ⅞"
	-	-	0 - 71 ¾"
Power supply (V/PH/Hz/A)	230/1/60/20	230/1/60/20	230/1/60/20

ACCESSORIES



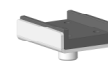
Control unit on both columns
Item no.: 0029103



Pad extension 80mm. Set = 4 units
Item no.: 0029159



Pad extension 140mm. Set = 4 units
Item no.: 0029161



U-Pad Set = 4 units
Item no.: 0029146

More accessories available

*All technical data preliminary, lifts currently in development. Final details after product release.

** Depending on arm variant