



HYDRAULIC 2-POST LIFT

# POWER LIFT SLH

**ONE LIFT. ENDLESS POSSIBILITIES.**



 **EV Ready**

## THE NEW GENERATION OF HYDRAULIC LIFTS

- ✓ Best in market pick-up area and arm range for full flexibility and EV compatibility
- ✓ Space-saving design. Save 10" plus per lift, that's almost 30 sqft per bay
- ✓ Up to 50% less installation time due to pre-assembly and the patent pending Quick-Bridge
- ✓ Fine adjustable pick-up pads with additional instant-adjust (patent pending)

**8000 LBS | 10000 LBS | 12000 LBS (coming soon)**

Made  
 in  
 Germany

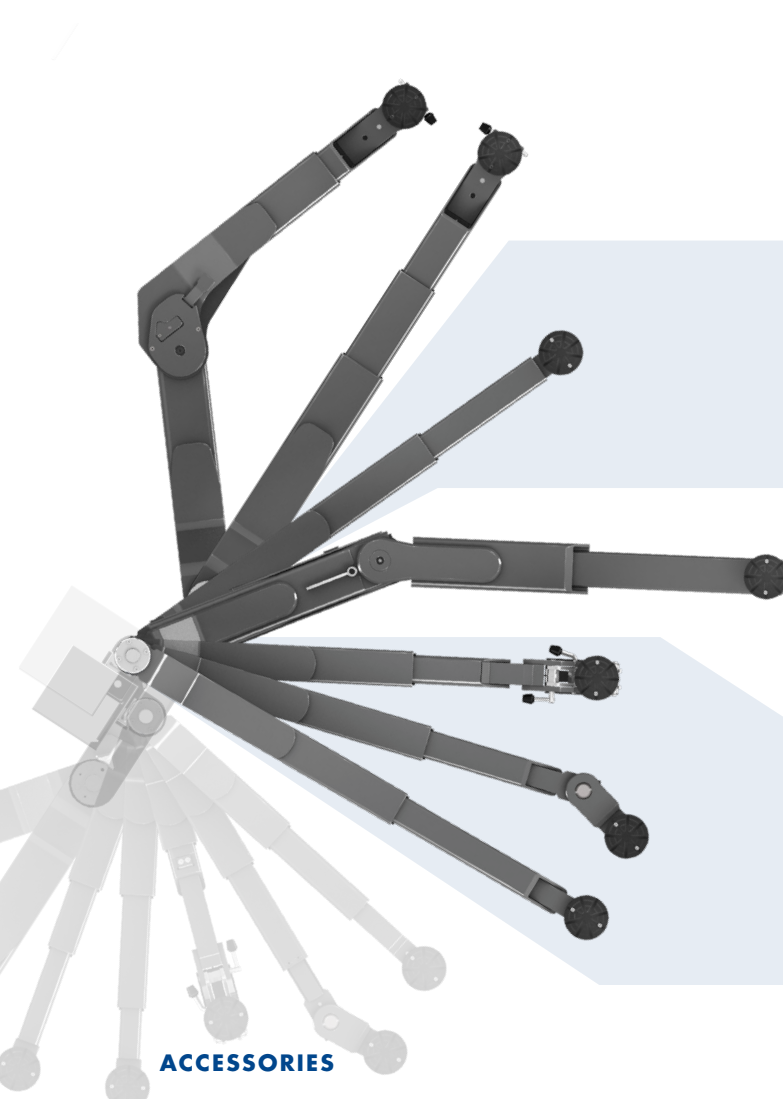


HYDRAULIC 2-POST LIFT

# POWER LIFT SLH

## Space saving, flexible and fully customizable

Fast lifting and lowering times, mechanical safety locks, mechanical synchronization, high productivity, intelligent features and life cycles up to 30 years: It is not without reason that Nussbaum lifts are considered the best equipment for automotive workshops. The POWER LIFT SLH is the perfect combination of robustness, premium hydraulics and mechanical safety while having industry leading pick-up possibilities. German quality at the service of your workshop



**12000 LBS**



DG - Arm  
Double jointed for the biggest pick-up range in the industry



UNI - Arm  
the perfect partner for the transporter workshop

**10000 LBS**



UNI - Arm  
the Allrounder for cars and transporters

**OTTO 8000 LBS**



OTTO - Arm  
perfect combination of double jointed and double telescopic arms

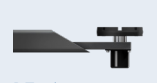


OTTO MM - Arm  
Additional comfort with Mini-Max Arms



OTTO VT - Arm  
High end, quick adjustable pick-up pads for very narrow spots especially for battery disassembly

**8000 LBS**



DT - Arm  
short arm has 3 stages



MM - Arm  
Ideal for deep drawn side skirt or off-road vehicles



LoPro - Arm  
Extremely flat construction



EV - Arm  
more flexibility for Electric Vehicles

**ACCESSORIES**



Full range of plug in adapters available. The perfect match for every gasoline, hybrid or fully electric vehicle.



Mini-Max adapter for SLH 12, Capacity 9000 lbs



Wheel-fork adapter for SLH 12

## POWER LIFT SLH: different versions built to your needs

All versions available with full range of arms and two different height extensions

**Mechanical**

Air cooled power unit with manual single point lock release

**Advanced**

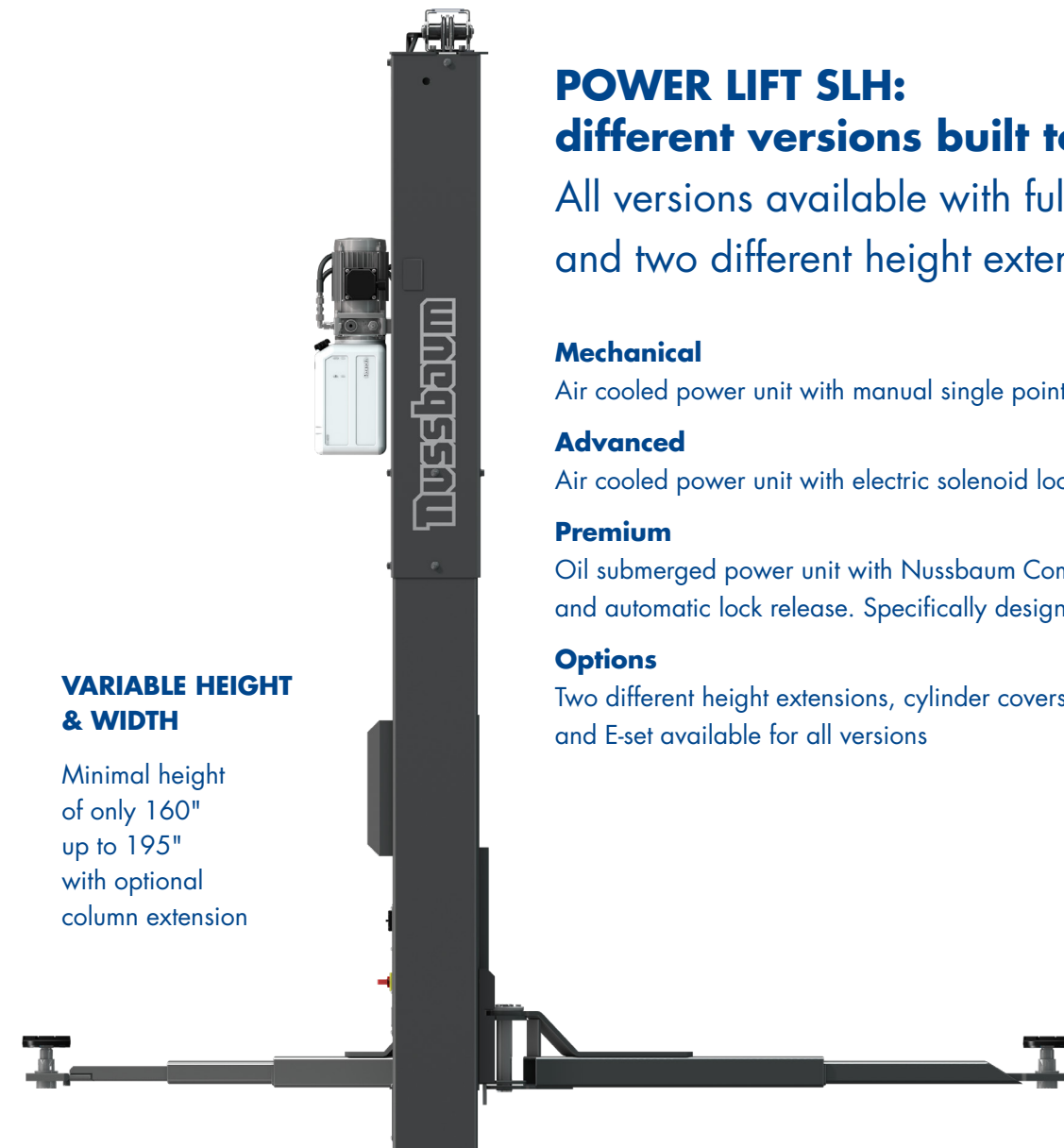
Air cooled power unit with electric solenoid lock release

**Premium**

Oil submerged power unit with Nussbaum Commander for precise lowering and automatic lock release. Specifically designed for EV battery disassembly

**Options**

Two different height extensions, cylinder covers and E-set available for all versions



**VARIABLE HEIGHT & WIDTH**

Minimal height of only 160" up to 195" with optional column extension

## Thoughtful design

- ✓ No baseplate
- ✓ Manual or electric lock control available
- ✓ 14 locking positions for comfortable working
- ✓ Two height extensions available - Optional cylinder Cover available
- ✓ Door guard on columns
- ✓ Oil submerged motor available: Durable and quiet, constant oil viscosity and therefore constant running speed - even at cold temperatures

## Precise control

- ✓ Smooth, precise lowering with the optional NUSSBAUM-Commander in Premium series
- ✓ No lifting before lowering necessary with optional automatic lock control



## MEASURED FOR SUCCESS

POWER LIFT SLH		8	10	12*
<b>Lifting capacity (lbs)</b>		<b>8,000</b>	<b>10,000</b>	<b>12,000</b>
<b>Lifting height max. (inch)**</b>		<b>76 ¼"</b>	<b>78 ¼"</b>	<b>79 ¼"</b>
<b>Lowest lifting point (inch)</b>	Version DT	3 ¾" - 6"	-	-
	Version MINI-MAX	3" - 7 ¼"	-	-
	Version LoPro	3 ½" - 4 ½"	-	-
	Version OTTO*	4 ½" - 7 ½"	-	-
	Version UNI	-	4 ½" - 7 ½"	5 ½" - 8"
	Version DG	-	-	5 ½" - 8 ½"
<b>Total height (inch)</b>		<b>160" - 181"</b>	<b>160" - 181"</b>	<b>160" - 181" - 195"</b>
<b>Recommended total width (inch)**</b>		<b>127 ⅞" - 131 ⅞"</b>	<b>128 ¾" - 132 ⅝"</b>	<b>140 ½" - 144 ½"</b>
<b>Column distance (inch)**</b>		<b>105 ¾" - 109 ¼"</b>	<b>105 ¾" - 109 ⅝"</b>	<b>109 ½" - 113 ⅜"</b>
<b>Arm-extraction long (inch)</b>	Version DT	37" - 58 7/8"	-	-
	Version MINI-MAX	37" - 58 7/8"	-	-
	Version LoPro	33" - 54 3/8"	-	-
	Version OTTO*	39 1/8" - 71 3/4"	-	-
	Version UNI	-	36 5/8" - 72 7/8"	27 1/4" - 66 7/8"
	Version DG	-	-	0 - 71 3/4"
<b>Arm-extraction short (inch)</b>	Version DT	22 ½" - 46"	-	-
	Version MINI-MAX	23 5/8" - 38 ½"	-	-
	Version LoPro	23 ¼" - 34"	-	-
	Version OTTO*	22 ½" - 45 5/8"	-	-
	Version UNI	-	23 ¼" - 45 5/8"	27 ¼" - 66 7/8"
	Version DG	-	-	0 - 71 ¾"
<b>Power supply (V/Ph/Hz/A)</b>		<b>230 / 1 / 60 / 20</b>	<b>230 / 1 / 60 / 20</b>	<b>230 / 1 / 60 / 20</b>
<b>Motor (hp)</b>		<b>4</b>	<b>4</b>	<b>4</b>

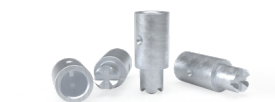
\*All technical data preliminary, lifts currently in development. Final details after product release.

\*\* Depending on arm variant

### ACCESSORIES



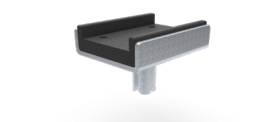
Control unit on both columns  
Item n°.: 0029103



Pad extension 3". Set=4 units  
Item n°.: 0029159



Pad extension 5,5". Set=4 units  
Item n°.: 0029161



U-Pad Set=4 units  
Item n°.: 0029146



Extension holder  
Item n°.: 235SLH05770

**More accessories  
available**